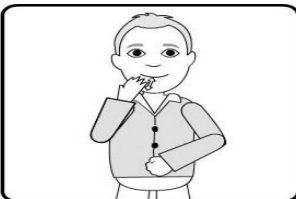


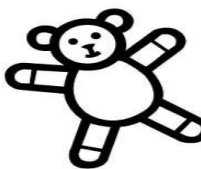
# NEWSLETTER

May 2011

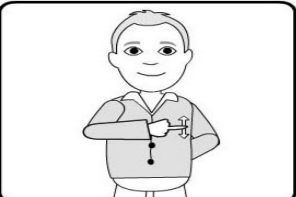
## Makaton



Eat



Teddy



Toilet

In this Month's  
Issue:

- Toy Library
- Mobile Dentist
- Dad's Fact
- Playscheme
- Fathers Day Family Event
- Satisfaction Survey
- Babies/Tweenies/Leapfrogs
- Father's Day Family Event
- Centre Closures
- National Smile Month
- Bungee Charity Event
- National Walking Month



COALHEATH LANE, SHELFIELD, WALSALL. WS4 1PL

Tel: 01922 694143 Email: [info@greenfieldcc.co.uk](mailto:info@greenfieldcc.co.uk) Web:

## BABY NEWS

In April, Babies have been learning ways in which to communicate by using Makaton, which will continue in May. We have put a few examples on the front of the newsletter for you to try at home. We have also been out and about in our local community by taking trips to the park and going out on to the field to make the most of the nice

weather we have had. The babies have enjoyed taking part in Easter Activities and will be doing plenty more creative fun.



## TWEENIES AND LEAPFROGS NEWS

In both Tweenies and Leapfrogs we have been learning Makaton as well as taking quite a few outings to our local park. The development of the children's outdoor area is now very much underway. The grass has now been put down and we will soon have lots of new outdoor products for the children to play with.

The Tweenies are currently making a birthday display to put each child's photo on for their birthday month.

Leapfrogs have been focussing their learning on numbers by using rhymes, games and other activities to create a fun way of learning.

## PARENT'S VOICE

Please can we remind all parents/carers to take a couple of minutes to write on the **Parent's Voice Wall** in Babies and Tweenies. We really appreciate your input and it helps us to plan your child's learning around this.

## CENTRE CLOSURES

The Centre will be closed on the following days for bank holiday:

**Monday 2nd May**

**Monday 30th May**

**Tuesday 31st May**

Sorry for any inconvenience this may cause. You will not be charged for these days.

## SPECIAL DATES IN MAY

**1st MAY 2011**

May Day

**2nd MAY 2011**

Bank Holiday Monday

**15th MAY to 15th JUNE 2011**

National Smile Month

**30th MAY 2011**

Spring Bank Holiday

**30th MAY to 5th JUNE**

National Family Week

## SUNCREAM AND HATS

Please could we ask all parents/carers to remember to bring their children's sun hats in each day with their child's name inside.

We have also had a few parents kindly donate 50p so we can buy a big tub of sun cream for each of the rooms. If anyone else would like to make a donation of 50p this would be very much appreciated.

Many Thanks.





## NATIONAL SMILE MONTH

National Smile Month is between the **15th May** and **15th June**. The theme for this year is to encourage people to smile, to look after their teeth and to maintain them for life. In order for us as a Centre to help raise awareness of good oral health we will be



having a lady from Walsall NHS coming into the Centre on **Thursday 9th June** from **10.00am - 11.00am**. We thought it may be a fun way of explaining to the children the importance of looking after their teeth. There will be puppets and activities such as colouring to make it more enjoyable along with some free goodies. If your child is not in our care on this day, parents are more than welcome to come along with their children at 10.00am or 10.30am as there will be two sessions. Please find enclosed some more information regarding the British Dental Health Foundation.

## MOBILE DENTIST

The mobile dentist will be visiting the centre on: **Wednesday 1st June** from **9.30am - 4.00pm**. If your child is in our care on this day and you would like them to be seen by the dentist, please could you complete a parent consent form at Reception. Alternately you are more than welcome to bring your child along.

## TOY LIBRARY

The Toy Library will be visiting the Centre on **Friday 13th May** from **10.30am-11.30am**.



There are a huge range of toys available to borrow for children aged 0 to 12 years old, including toys for children with special needs. Why not pop along and take a look.

## FUN AND FREE FOOD DAY

On **Saturday 14th May 10.00am - 12.00pm** Greenfield Children's Centre will be joining up with Pelsall Children's Centre, Health Services and Walsall Council to offer fun and free food! This is aimed at the 0 - 5 age range along with parents/carers/ Siblings, to promote active lifestyles as well as eating and cooking nutritional food that is reasonably priced. There will be various activities such as dance, hula hoops, building blocks, hopscotch, multi-sports and various other fun activities going on. There will also be some main courses and puddings for parents/carers and children to try. Best thing about it is that it is FREE. It will be taking place at Sheffield Academy so please come along as we would love to see you there.

## MAY PLAYScheme

We will be running a Playscheme during the school holidays in May on the following days:

**Wed 1st June to Fri 3rd June** from **10.00am - 4.00pm**. There will be many different activities such as local outings, sports, crafts, wii tournaments, obstacle courses and much much more.

The price is £17.00 per day and extra hours are available. If you would like to book a place for your child, please collect a form from Reception and return it to Claire as soon as possible as spaces are limited.



Thank you.



### CONTACT NUMBERS

If you change your telephone number or you move address, please could you inform the staff on Reception a.s.a.p. It is vital that your child's contact information is up to date at all times, in case of emergency.

Also, if your child develops an allergy/ food intolerance or any other medical condition after they start at the Centre, please could you inform room and Reception staff about this. Many Thanks.

### FATHER'S DAY FAMILY EVENT

On **Saturday 18th June from 10.00am - 12.00pm** we will be

holding a Father's Day Family Event here at the Centre. Everyone is

Welcome! Tempest Photography will be here to do a fantastic family portrait. There will also be lots of creative fun and activities going on such as den making and bird box decorating. We hope the weather will be nice as it would be lovely to do the activities outside. If you would like to come along please book at Reception a.s.a.p.



### FUNDRAISING

On **Saturday 7th May 2011 at 1.15pm** several members of our Greenfield's staff, who include **Debs, Mandeep, Emma, Rach.S and Jodie**, will be

taking part in a reverse bungee jump to try and raise money for Birmingham Children's Hospital. If you would like to sponsor any of our staff we would be really grateful. If you could provide us with sponsor money up front this would be a great help. Your welcome to come along and watch at The Longhorn, Sutton Road.

Thank you for your kind support.

### SATISFACTION SURVEYS

We have sent out a satisfaction survey with all invoices, for parents/carers to complete. We would like to know what you think about the services that we provide here at Greenfield's.

What you like or what you would like us to improve on. We have a purple box in the main entrance where you can pop your survey into.

There will be a prize draw where a winner will be chosen at random to win £25 in high street vouchers. The closing date for all surveys to be in will be **26th June 2011** and the draw will be held on **Thursday 30th June**. Many Thanks.

### NATIONAL WALKING MONTH

May is national walking month. A good opportunity for the whole of the family to get active! For some free information on local walks please visit the following

websites:

[www.getwalking.org/getwalkingday](http://www.getwalking.org/getwalkingday)

[www.livingstreets.org.uk](http://www.livingstreets.org.uk)

[www.wfh.naturalengland.org.uk](http://www.wfh.naturalengland.org.uk)

COALHEATH LANE, SHELFIELD, WALSALL. WS4 1PL

Tel: 01922 694143 Email: [info@greenfieldcc.co.uk](mailto:info@greenfieldcc.co.uk) Web: